



2021 Volume 1

The quarterly newsletter of
D&S Dental Laboratory, Inc.

Waunakee – 800-236-3859

Baraboo – 800-362-3340

Eau Claire – 800-591-7964

Rockford – 815-964-8932

Greenfield – 414-546-3040

dnsdental.com

info@dnsdental.com

INCISAL EDGE

INSIDE THIS ISSUE

iTero Element
Intraoral Scanner
pg. 2

Discounts for Digital
Impressions
pg. 2

Pay Bills and View
Statements Online
pg. 2

ShadeWave Webinar
pg. 3

How to Prescribe the
New Printed Denture
pg. 3

Technician's Tip - Crown
Under Partial
pg. 4

PLEASE NOTE
D&S Dental Laboratory
Will Be Closed the
Following Dates

May 31
Memorial Day

July 2
Independence Day

September 6
Labor Day

November 25–26
Thanksgiving

December 24
Christmas

3D Printing Continues to Amaze *D&S Comfort Splints and Nightguards*

Whether your patient is a heavy bruxer or needs to protect restorations, our new D&S Comfort Splints/Nightguards have the same comfort of a dual laminate splint with less bulk and more durability. Made from KeySplint Soft clear resin on a Carbon printer, these nightguards are less expensive than a traditional or milled nightguard. And because they are CAD/CAM-fabricated, a digital record is retained for easy reprints, which are half-price for six months after the original appliance delivery.

Be sure to write D&S Comfort Splint or Nightguard on your RX form.

COMMON QUESTIONS

Can the technician build an anterior ramp for canine guidance?

Yes

Can we specify the thickness of the nightguard, or do they all come standard thickness?

Yes, you can specify. 3mm is the ideal thickness.

Can you design a Tanner Splint with this product?

Yes

Is it still a 4-day turnaround with a traditional impression?

Yes

How do digital records and reprints work?

Once your restoration is designed, the lab saves it as an SDL file with the doctor and patient name. We simply pull up the file and reprint it.

Do you ever have requests to make the nightguard occlusion in CR position? If so, how do you recommend we take the bite registration?

However you would normally capture the bite in the analog world will work for digital.

Can you make an NTI type splint but with full coverage, only occluding in the anterior? How would you record the protrusive bite with a digital workflow?

Yes, you would take a centric bite registration and provide us a measurement of how far protrusively you want the ramp built.



On-Demand Webinar *Carbon Printed Nightguards*

To learn more about the D&S Comfort Splints and how they are fabricated, watch the one-hour webinar. Complete the quiz and receive 1 hour CE credit. Go to www.dnsdental.com and select *Products > Appliances > Nightguards & Splints*. Select the *On-Demand Webinar* link.

You'll Learn

- Clinical and lab workflow of printed nightguards
- Material and strength characteristics
- The benefits of printed nightguards vs. traditional acrylic
- Carbon's DLS technology and how it produces 3D printed parts



Printed on recycled paper

PRODUCT SPOTLIGHT

iTero Element Intraoral Scanner



Our lab often gets asked for its recommendations on intraoral scanners. While we can accept digital impressions from almost every scanner on the market and will always defer to the preference of the dentist and practice, the majority of our dentists do use the iTero Element intraoral scanner.

From the lab perspective, we've found their workflow to be smooth and we have close relationships with the iTero reps in the areas around our labs. Contact us if you want help scheduling a demo in your office.

iTero Element 5D offers:

- **One tip** - Requires no special tips, wings or extraneous hardware
- **One scan** - Simultaneously captures 3D, NIRI and color images in as little as 60 seconds
- **One system** - Integrates the power of diagnostic, restorative and Invisalign® workflows
- **Zero radiation** - Near-infrared imaging (NIRI) means no radiation

Learn more at iTero.com. Information can also be found on our website under Resources> Resource Sheets.



Discounts for Digital Impressions

You can save money when you submit digital impressions to D&S Dental Laboratory.

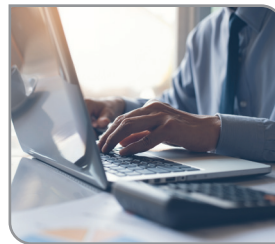
Learn more at dnsdental.com/scanners.

- Get **\$10 off** with every digital impression case submitted (only valid on D&S lab-printed models and cases involving more than model work only)
- Get **\$50 lab credit** if you submit 20+ digital cases in one month
- Get **\$100 lab credit** if you submit 40+ digital cases in one month



D&S Calendars

If your office would like a D&S calendar, or some extras, noting dates we are closed in 2021, please call Joleen at 800.236.3859. Offer available while supplies last.



Pay Bills and View Statements Online

You can sign up to pay bills and view past invoices and statements online. Simply send your email address to **accounting@dnsdental.com**, and

we'll email you the invitation from evidentlabs.com.

If you want multiple people in your office to have access, you can do one of two things:

1. Sign up and share the username and password with everyone in the office. You can go to the Doctor Portal link from our website to log in.
2. Have each individual in the office set up their own username (email) and password. Each person will need to send their own individual email address to **accounting@dnsdental.com**. They will then need to accept the invitation from evidentlabs.com.

Note: Please tell Accounting if you want to access multiple doctors under one account. An invitation will need to be sent to you from each doctor account. Also, let us know if you prefer to have statements emailed to you.

Questions? Call D&S Accounting at 800.236.3859

ShadeWave Webinar

Shade Matching Goes MOBILE

Tuesday, February 2, 2021 | 6:00–7:00 p.m. CT

Presented by Dennis Braunston, ShadeWave CEO

We all want restorations that perform and look great! Communicating and determining aesthetics (including shade) using photography has taken a quantum leap forward, without a patient visit to the lab. The “dream” system is here and we want to share it with you in this one-hour webinar.

Experience a new paradigm in shade communication and photo documentation. Capture and securely send professional quality, color-corrected photos to your lab, instantly from your mobile phone. ShadeWave provides patented color correction and accurate shade map creation, all from one mouse click, no matter your lighting ... no matter what shade tab you choose. It's easier ... faster ... better!

- Get tips on how to take better shade photos
- Understand how the mobile photography app works and connects directly to our lab
- Learn how the patented software processes and provides shade maps

Questions? Contact Peter at 800.236.3859 or email info@dnsdental.com.

Register at www.dnsdental.com/shadewave



“I have to tell you that I AM A BELIEVER ... Now that I have ShadeWave, I’m not going to be as nervous about single tooth cases as I have been in the past! This is a great service to the dental world – helping us really quantitatively communicate shade needs to the ceramist.”

– Scott Beattie, DDS
Beattie Family Dental
Eagle River, WI

How to Prescribe the New Printed Denture

D&S Dental is a Certified Lucitone Digital Print Laboratory, which means we can 3D print complete dentures. Select Digital Denture on your next RX and follow these steps.



DENTIST APPOINTMENTS

1

Impression

Dentist uses current impression technique

2

Bite Registration

Dentist takes bite registration using baseplate and wax rim and then takes reline wash final impression inside the baseplate, using it as their custom tray

3

Try In

Dentist uses provided checklist to mark up try-in with Sharpie pen and send back any notes for adjustments

4

Delivery

Dentist delivers final denture to patient

LAB STEPS

1

Model

D&S pours the model and makes baseplate and wax rim based on the provided impression

2

Scan, Design and Print

D&S scans final bite rim impression to create digital file. D&S sets up teeth, designs in the software and prints mono-block try-in to send to dentist

3

Final Denture

D&S makes any adjustments in design software, prints denture base and fuses teeth to base



1020 Quinn Drive
Waunakee, WI 53597
dnsdental.com

PRSRT STD
US POSTAGE
PAID
MADISON WI
PERMIT #2783



CONNECT WITH US!




Your Full Service
Certified Dental Laboratory



TECHNICIAN'S TIP

Fabricating a Crown to an Existing Removable Partial Denture

Source: Spear Education

1. Prepare the tooth and make an impression with your desired impression material. **Make sure you have plenty of prep clearance around the clasps and rest seat.** Then seat the removable partial denture and express some bite registration material. (A medium to light body is probably easier than something hard and rigid for trimming purposes.)
 2. Be sure to cover the clasps and rest seats. Once set, remove the removable partial denture and the registration and carefully start trimming back the material until you expose the outer surfaces of the clasps and rests and any material that will prevent you from releasing the removable partial denture.
 3. Push the index out of the partial by gently pushing on it apically. You will be able to **see some of the preparation**
- 
4. **of your tooth in this registration.** You want this so that the lab can index it on the die (from the first impression you made). Be sure to put it in a box when sending it to your lab to protect it during shipping.
 5. Once at the lab, the bite registration will be fitted on the die and pattern resin will be flowed into the grooves of the clasps and rests. It also will need to extend down onto the model where the minor connector portion of the removable partial denture would be.
 5. Once this has set, the lab will cut away the registration material and utilize the resin clasp assembly to construct the contours of the crown.

For more photos, go to www.dnsdental.com/cup